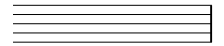


For Lina  
Winter 1991

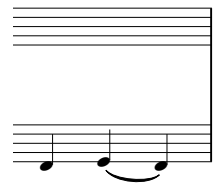
# W I N T E R M U S I C

Music & Arr. by Wolfgang Oppelt  
womus.de

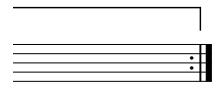
Tenor



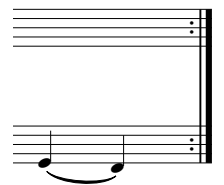
## PREVIEW



## VORSCHAU



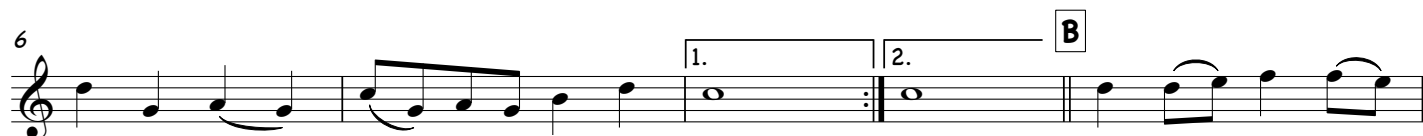
## APERÇU



# WINTER MUSIC

Music & Arr. by Wolfgang Oppelt  
womus.de

**A** Not Too Fast  $\text{♩}=100$



## PREVIEW



## VORSCHAU



## APERÇU



# WINTER MUSIC

Music & Arr. by Wolfgang Oppelt  
womus.de

**A** Not Too Fast ♩=100

Musical notation for section A, measures 1-5. The piece is in 3/4 time with a key signature of two flats (B-flat and E-flat). The first measure starts with a piano dynamic marking of *mf* and a fermata over a whole note chord. The subsequent measures contain various chords and single notes.

## PREVIEW

Musical notation for section A, measures 6-10. Measure 6 is marked with a '6' above the staff. The notation shows chords and single notes in both the treble and bass staves.

Musical notation for section A, measures 6-10. This block shows the continuation of the piano part from the previous block, with a piano dynamic marking of *p* in the first measure.

## VORSCHAU

Musical notation for section A, measures 11-15. Measure 11 is marked with an '11' above the staff. The notation shows chords and single notes in both the treble and bass staves.

Musical notation for section A, measures 11-15. This block shows the continuation of the piano part from the previous block.

## APERÇU

Musical notation for section C, measures 16-20. Measure 16 is marked with a '16' above the staff. Measure 17 is marked with a 'C' above the staff. The notation shows chords and single notes in both the treble and bass staves, with a piano dynamic marking of *mf* in measure 17.