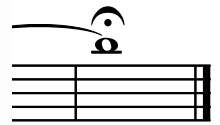
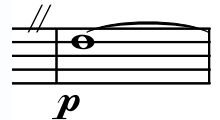
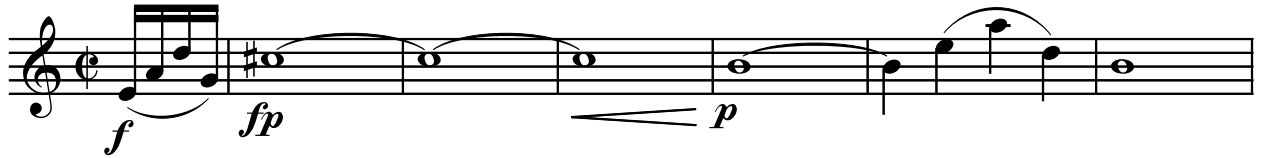


Sopransax in B

DER ENGEL VOM WESTLICHEN FENSTER I. PRÉLUDE

Robert Brunnlechner, op.38

Lento Halbe = 64



PREVIEW

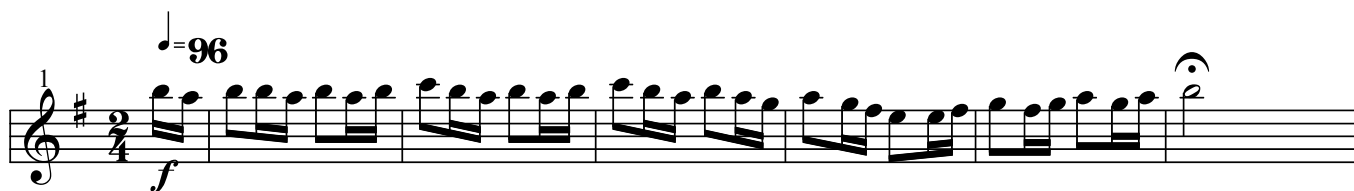
VORSCHAU

APERÇU

Sopransax in B

II. BOURRÉE

♩ = 96



PREVIEW



VORSCHAU



APERÇU



D.C. al Fine

Sopransax in B

III. MENUETT

1 $\text{♩} = 104$

mf *simile*

7

PREVIEW

13

VORSCHAU

17

3

APERÇU

22

27

33

cresc. *f* *p*

40

simile

D.C. al Fine

Sopransax in B

IV. SARABANDE

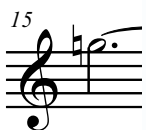
$\text{♩} = 60$



PREVIEW



VORSCHAU



APERÇU



Sopransax in B

V. GIGUE

$\bullet = 132$

3
p *cresc*

10 *f*

cresc

PREVIEW

16 *f*

ff

VORSCHAU

APERÇU

26 *pp* nur

32 *mf*

al Fine, poi Coda

39 *mf* *f* **Coda**

45 *mf* *f* Altsax in Es

53 *mf* *cresc* *ff*

67 *mf* **Coda**

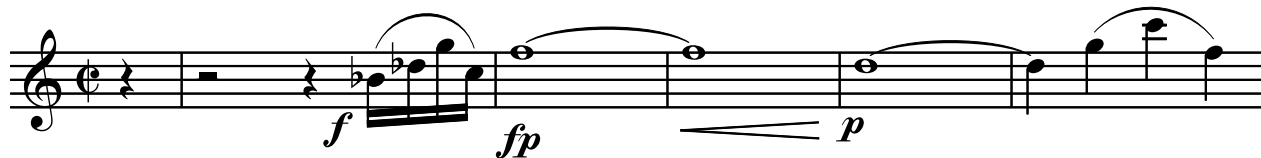
Altsax in Es

DER ENGEL VOM WESTLICHEN FENSTER

I. PRÉLUDE

Robert Brunnlechner, op.38

Lento Halbe = 64



PREVIEW

VORSCHAU

APERÇU

Altsax in Es

II. BOURRÉE



PREVIEW



VORSCHAU



APERÇU



D.C. al Fine

III. MENUETT

1 *mf* *simile*

PREVIEW

VORSCHAU

Fine

APERÇU

cresc. *f* *p*

simile *D.C. al Fine*

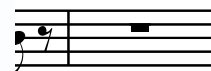
Altsax in Es

IV. SARABANDE

$\text{♩} = 60$



PREVIEW



VORSCHAU



APERÇU

Altsax in Es

V. GIGUE

f *p*

cresc *f*

13

13

PREVIEW

18

f

VORSCHAU

27

GP *p*

APERÇU

34

pen GP *Fine*

41

41

mf *f*

D.C. al Fine, poi Coda

mf *f*

Coda 9

mf *f* *mf* *cresc*

ff 4