

# MUSICALISCHES OPFER

Canon a 2 per Augmentationem, contrario Motu (3d)

Johann Sebastian Bach, BWV 1079

Violine

Viola

Violoncello



3

VI.

Va.

Vc.



## PREVIEW

VI.

Va.

Vc.

## VORSCHAU



## APERÇU

VI.

Va.

Vc.



10

VI.

Va.

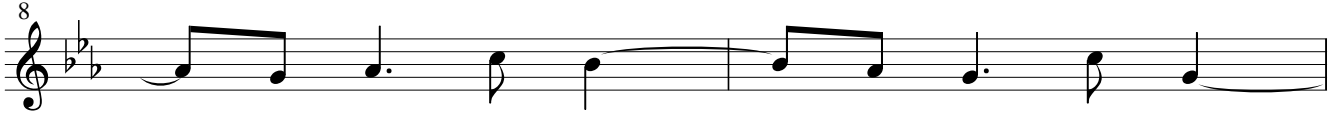
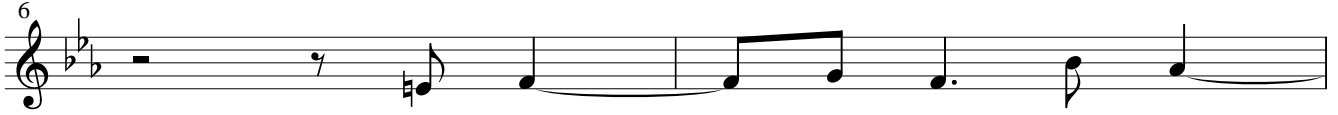
Vc.



# MUSICALISCHES OPFER

Canon a 2 per Augmentationem, contrario Motu (3d) Johann Sebastian Bach, BWV 1079

Violine



PREVIEW

VORSCHAU

APERÇU

# MUSICALISCHES OPFER

Canon a 2 per Augmentationem, contrario Motu (3d)

Johann Sebastian Bach, BWV 1079

Viola



Musical staff for Viola, measures 1-2. The staff is in bass clef, 4/4 time, and B-flat major. It begins with a half note B-flat, followed by a quarter note G, a quarter note F, and a quarter note E. The second measure contains a half note D, a quarter note C, a quarter note B-flat, and a quarter note A.

3



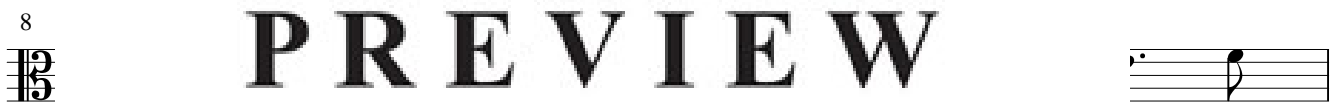
Musical staff for Viola, measures 3-4. Measure 3 contains a half note G, a quarter note F, a quarter note E, and a quarter note D. Measure 4 contains a half note C, a quarter note B-flat, a quarter note A, and a quarter note G. Trills are indicated above the notes in measures 3 and 4.

6



Musical staff for Viola, measures 5-6. Measure 5 contains a half note F, a quarter note E, a quarter note D, and a quarter note C. Measure 6 contains a half note B-flat, a quarter note A, a quarter note G, and a quarter note F. Trills are indicated above the notes in measures 5 and 6.

8



Musical staff for Viola, measure 7. It contains a half note E, a quarter note D, a quarter note C, and a quarter note B-flat. A trill is indicated above the note in measure 7.

# PREVIEW

10



Musical staff for Viola, measure 8. It contains a half note D, a quarter note C, a quarter note B-flat, and a quarter note A. A trill is indicated above the note in measure 8.

# VORSCHAU

13



Musical staff for Viola, measure 9. It contains a half note C, a quarter note B-flat, a quarter note A, and a quarter note G. A trill is indicated above the note in measure 9.

# APERÇU

15



Musical staff for Viola, measure 10. It contains a half note B-flat, a quarter note A, a quarter note G, and a quarter note F. A trill is indicated above the note in measure 10.

17



Musical staff for Viola, measures 11-12. Measure 11 contains a half note E, a quarter note D, a quarter note C, and a quarter note B-flat. Measure 12 contains a half note A, a quarter note G, a quarter note F, and a quarter note E. Trills are indicated above the notes in measures 11 and 12.

20



Musical staff for Viola, measures 13-14. Measure 13 contains a half note D, a quarter note C, a quarter note B-flat, and a quarter note A. Measure 14 contains a half note G, a quarter note F, a quarter note E, and a quarter note D. Trills are indicated above the notes in measures 13 and 14.