

AVE MARIA

ENGLISH ADAPTATION

Franz Schubert 1797-1828

D. 839. op. 52 Nr. 6

arr. Jürgen Knuth

Orgel

Pedal

The organ introduction is written for a grand staff with a treble clef and a bass clef. The time signature is 12/8. The music features a flowing eighth-note melody in the right hand and a simple bass line in the left hand. A 'Pedal' marking is present at the bottom of the first measure.

5

1.
2.
3.

PREVIEW

8

1. M
2.
3. S

VORSCHAU

APERÇU

a maid - en's
we now must
the earth and

The vocal introduction consists of three lines of music, each with a different ending. The first line is marked with a '5' and the second with an '8'. The lyrics 'a maid - en's we now must the earth and' are written under the third line. The organ accompaniment is shown in a grand staff below the vocal line.

AVE MARIA

Franz Schubert 1797-1828

D. 839. op. 52 Nr. 6

arr. Jürgen Knuth

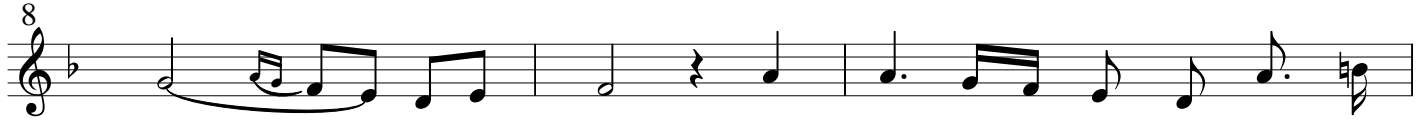
ENGLISH ADAPTATION



1. A - ve Ma - ri - - a!

2. A - ve Ma - ri - - a!

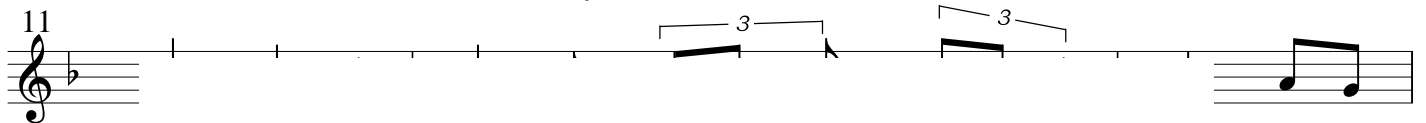
3. A - ve Ma - ri - - a!



1. Maid - - - - en mild! Lis - ten to a maid - en's

2. Un - - - - de - - filed! The flin - ty couch we now must

3. Stain - - - - less styled! Foul de - mons of the earth and



1.

2.

3.

Thou

if

shall

PREVIEW



1.

2.

3.

Save

The

We

VORSCHAU



1.

2.

3.

though

shall

be -

APERÇU



2.

3. neath thy gui - - dance re - - con - ciled. Hear for a maid a maid - - en's

a maid - - en's

a maid - - en's



1. pray - er. O Moth - er, hear a sup - pli - - ant child!

2. pray - er. O Moth - er, hear a sup - pli - - ant child!

3. pray - er, and for a fa - - ther hear a child!



A - ve Ma - ri - - a!

AVE MARIA

ENGLISH ADAPTATION

Franz Schubert 1797-1828

D. 839. op. 52 Nr. 6

arr. Jürgen Knuth

Musical score for the first system of 'Ave Maria'. It features a treble clef with a 12/8 time signature and a key signature of one flat (B-flat). The right hand contains a melodic line with eighth and sixteenth notes. The left hand contains a bass line with quarter and eighth notes. A 'Pedal' section is indicated at the bottom of the left hand with a bracket and a 'Pedal' label. The word 'Orgel' is written above the left hand.

Musical score for the second system of 'Ave Maria', starting at measure 5. It shows the continuation of the melodic and bass lines from the first system.

PREVIEW

Musical score for the third system of 'Ave Maria', starting at measure 9. It shows the continuation of the melodic and bass lines.

VORSCHAU

Musical score for the fourth system of 'Ave Maria', starting at measure 13. It shows the continuation of the melodic and bass lines.

APERÇU

Musical score for the fifth system of 'Ave Maria', starting at measure 17. It shows the continuation of the melodic and bass lines.

Musical score for the sixth system of 'Ave Maria', starting at measure 21. It shows the continuation of the melodic and bass lines.