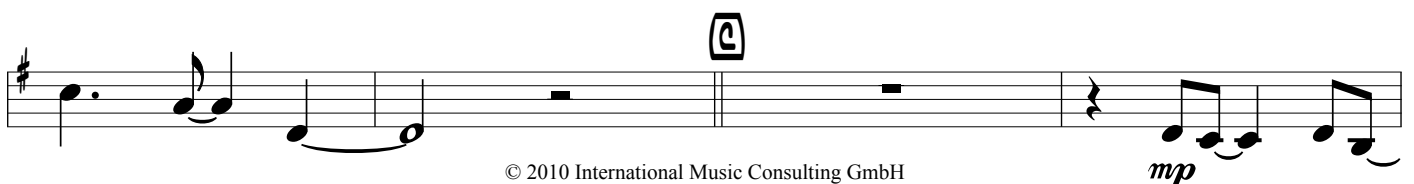
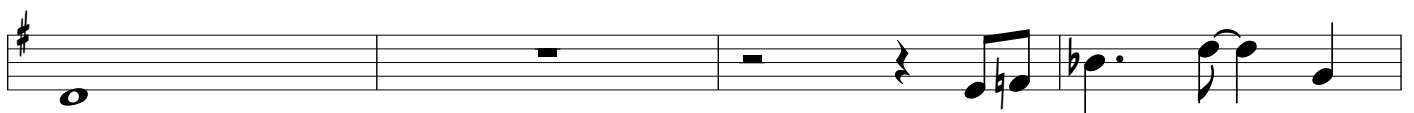
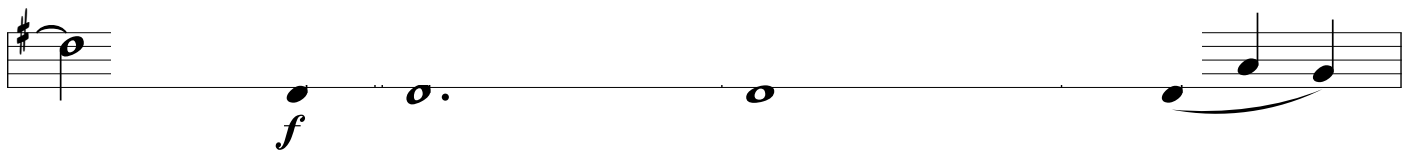
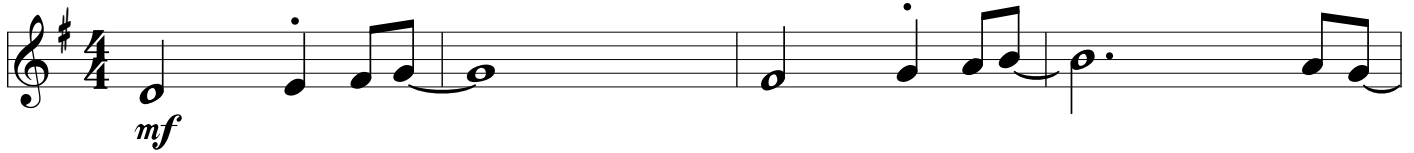


Blue In Blue

(Rumba)

Music and Arrangement by Eric George Stevens

Bb-Trumpet



Blue In Blue

(Rumba)

Music and Arrangement by Eric George Stevens

Bass

The first two measures of the bass line are shown. The first measure starts with a dynamic marking of *mf*. The second measure is marked with a circled 'A' and a *Sim.* (simile) marking, indicating a repeat of the first measure's pattern.

PREVIEW

VORSCHAU

APERÇU

Chord progression: A_m , B_b , C , B_b (with E_b below).

Blue In Blue

(Rumba)

Music and Arrangement by Eric George Stevens

Bb-Clarinet

SOLO
mf

PREVIEW

VORSCHAU

APERÇU

Blue In Blue

(Rumba)

Music and Arrangement by Eric George Stevens

Drums

mf

A

4

PREVIEW

VORSCHAU

APERÇU

9

A

B

STRINGS SOLO

Blue In Blue

(Rumba)

Music and Arrangement by Eric George Stevens

Guitar

First system of guitar notation in 4/4 time. The treble clef staff shows a melody starting with a quarter note F (mf), followed by eighth notes Bb, C, Fm, Bb, and a quarter note Em. The bass clef staff shows chords: F, Bb/F, C/F, Fm/Bb, Em/A, and Gm7. A repeat sign with a first ending bracket is present in the bass staff, starting with Gm7/C and ending with F.

PREVIEW

VORSCHAU

APERÇU

Preview section featuring chord diagrams and musical notation. On the left, diagrams for E, B, Em, and Bbm are shown. On the right, diagrams for n7, Bm7, and a first ending bracket are shown. The word 'PREVIEW' is centered at the top, 'VORSCHAU' in the middle, and 'APERÇU' at the bottom.

Second system of guitar notation in 4/4 time. The treble clef staff shows chords: Am/C, Bb/C, C/F, and Bbm/Eb. The bass clef staff shows a melody starting with a quarter note Ab, followed by eighth notes Gbma7, F#9, Eb7, Ebma7, Db13, and a quarter note Bb/C. The system ends with a diamond symbol.

Blue In Blue

(Rumba)

Music and Arrangement by Eric George Stevens

Keyboards

R.H. Strings

mf F B \flat C F m B \flat F m E m G m 7

A R.H. 1stX TACET

B \flat m7 E \flat A m C B \flat C B \flat m7 B \flat m7

1

Play

E m 7 A m 7 F7 B \flat m7 B \flat m7 G m 7 G m 7

Blue In Blue

(Rumba)

Music and Arrangement by Eric George Stevens

Trombone

mf

1st x TACET

PREVIEW

VORSCHAU

APERÇU

f