

MARY

T.&M.: Hanjo Gäbler

Musical score for the first system of 'MARY'. It features a grand staff with treble and bass clefs in 4/4 time. The melody is in the treble clef, and the accompaniment is in the bass clef. The lyrics are 'Ma - - ry, Ma - - ry!'. Chords are indicated above the staff: C, Dm/C, G/C, Bb/D, and C/E.

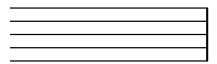
Vers 1. We have come from so far away.
And now we see the king who won't let us go astray.
A chil
His n:

Arrangement:
1. Sopranos alone

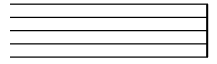
and Choir-Uuhs
repeating Coda

Musical staff for the 'PREVIEW' section, starting at measure 5. It shows a treble clef with a single note on the first line (F) and a bass clef with a single note on the first line (F).

PREVIEW

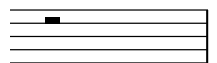
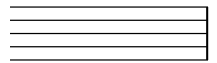


VORSCHAU



Musical staff for the 'APERÇU' section, starting at measure 9. It shows a treble clef with a single note on the first line (F) and a bass clef with a single note on the first line (F).

APERÇU



Musical score for the second system of 'MARY', starting at measure 13. It features a grand staff with treble and bass clefs in 4/4 time. The melody is in the treble clef, and the accompaniment is in the bass clef. The lyrics are 'Je - sus pure and ho - - ly!'. Chords are indicated above the staff: Am, G7/F, Em, Am, C/G, G7, and C. The word 'fine' is written at the end of the system.