

Musical score for the first system, featuring a bass line with a complex rhythmic pattern and a piano accompaniment with chords and a few melodic lines.

PREVIEW

VORSCHAU

APERÇU

Musical staves on the left and right sides of the central text area, serving as a preview for the following section.

Theme

Musical score for the 'Theme' section, starting with a piano (*p*) dynamic marking. It includes a bass line and a piano accompaniment with chords and melodic lines.

VARIATIONS

Euphonium

On a theme from "Norma"
by Vincent Bellini (1801-1835)

J.B. Arban (1825-1889)
Arranged by George Palton

Andante Maestoso

Musical notation for the first variation, starting with a circled 'A' and a dynamic marking of *mp*. The notation is in bass clef with a 12/8 time signature. It features a series of eighth notes and quarter notes, with a fermata over the first measure.

PREVIEW

VORSCHAU

APERÇU

Musical notation for the sixth variation, ending with a rest for 8 bars. The notation is in bass clef with a 12/8 time signature. It features a series of eighth notes and quarter notes, with a fermata over the first measure.

[8 bars rest]

8 Theme

p **C**

PREVIEW

VORSCHAU

APERÇU

D

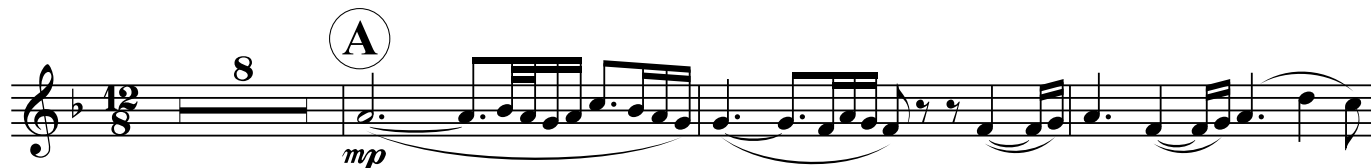
VARIATIONS

Euphonium

On a theme from "Norma"
by Vincent Bellini (1801-1835)

J.B. Arban (1825-1889)
Arranged by George Palton

Andante Maestoso



PREVIEW



VORSCHAU



APERÇU



8 Theme

PREVIEW

VORSCHAU

APERÇU