

MUSICALISCHES OPFER

Johann Sebastian Bach, BWV 1079

Canon a 2 per tonos (3e)

Violine

Viola

Violoncello



Musical score for Violin, Viola, and Cello, measures 1-3. The Violin part starts with a quarter note G4, followed by eighth notes A4, Bb4, and C5. The Viola part starts with a quarter rest, followed by eighth notes G3, A3, and Bb3. The Cello part starts with a quarter note G2, followed by eighth notes A2, Bb2, and C3.

4

PREVIEW



Musical score for Violin, Viola, and Cello, measures 4-6. The Violin part has a quarter rest, followed by eighth notes G4, A4, and Bb4. The Viola part has a quarter rest, followed by eighth notes G3, A3, and Bb3. The Cello part has a quarter rest, followed by eighth notes G2, A2, and Bb2.

7

VORSCHAU



Musical score for Violin, Viola, and Cello, measures 7-9. The Violin part has a quarter rest, followed by eighth notes G4, A4, and Bb4. The Viola part has a quarter rest, followed by eighth notes G3, A3, and Bb3. The Cello part has a quarter rest, followed by eighth notes G2, A2, and Bb2.

10

APERÇU



Musical score for Violin, Viola, and Cello, measures 10-12. The Violin part has a quarter rest, followed by eighth notes G4, A4, and Bb4. The Viola part has a quarter rest, followed by eighth notes G3, A3, and Bb3. The Cello part has a quarter rest, followed by eighth notes G2, A2, and Bb2.

13



Musical score for Violin, Viola, and Cello, measures 13-15. The Violin part has a quarter note G4, followed by eighth notes A4, Bb4, and C5. The Viola part has a quarter note G3, followed by eighth notes A3, Bb3, and C4. The Cello part has a quarter note G2, followed by eighth notes A2, Bb2, and C3.

MUSICALISCHES OPFER

Johann Sebastian Bach, BWV 1079

Canon a 2 per tonos (3e)



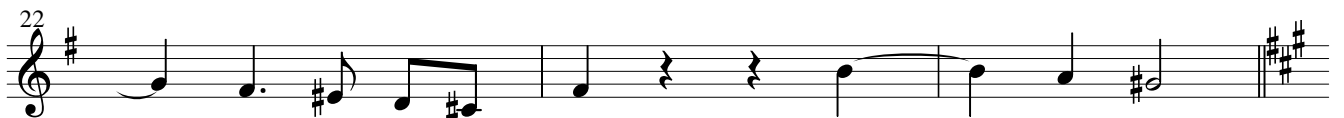
PREVIEW



VORSCHAU



APERÇU



MUSICALISCHES OPFER

Johann Sebastian Bach, BWV 1079

Canon a 2 per tonos (3e)

Viola



Musical notation for Viola, measures 1-3. The staff is in bass clef with a key signature of two flats (B-flat and E-flat) and a common time signature (C). Measure 1 contains a whole rest. Measure 2 begins with a repeat sign and contains a quarter note G4, an eighth note A4, and a quarter note B-flat4. Measure 3 contains a quarter note C5, a quarter note B-flat4, and a quarter note A4.

4



Musical notation for Viola, measures 4-6. Measure 4 contains a quarter note G4, a quarter note F4, and a quarter note E4. Measure 5 contains a quarter note D4, an eighth note C4, and a quarter note B3. Measure 6 contains a quarter note A3, a quarter note G3, and a quarter note F3.

7



Musical notation for Viola, measure 7. The staff is in bass clef with a key signature of two flats and a common time signature. The measure contains a quarter note E3, a quarter note D3, and a quarter note C3.

PREVIEW

10



Musical notation for Viola, measure 10. The staff is in bass clef with a key signature of two flats and a common time signature. The measure contains a quarter note B3, a quarter note A3, and a quarter note G3.

VORSCHAU

13



Musical notation for Viola, measure 13. The staff is in bass clef with a key signature of two flats and a common time signature. The measure contains a quarter note F3, a quarter note E3, and a quarter note D3.

APERÇU

16



Musical notation for Viola, measure 16. The staff is in bass clef with a key signature of two flats and a common time signature. The measure contains a quarter note C3, a quarter note B2, and a quarter note A2.

19



Musical notation for Viola, measure 19. The staff is in bass clef with a key signature of two flats and a common time signature. The measure contains a quarter note G2, a quarter note F2, and a quarter note E2.

22



Musical notation for Viola, measures 22-24. Measure 22 contains a quarter note D2, a quarter note C2, and a quarter note B1. Measure 23 contains a quarter note A1, a quarter note G1, and a quarter note F1. Measure 24 contains a quarter note E1, a quarter note D1, and a quarter note C1.

25



Musical notation for Viola, measures 25-27. Measure 25 contains a quarter note B1, a quarter note A1, and a quarter note G1. Measure 26 contains a quarter note F1, a quarter note E1, and a quarter note D1. Measure 27 contains a quarter note C1, a quarter note B1, and a quarter note A1.